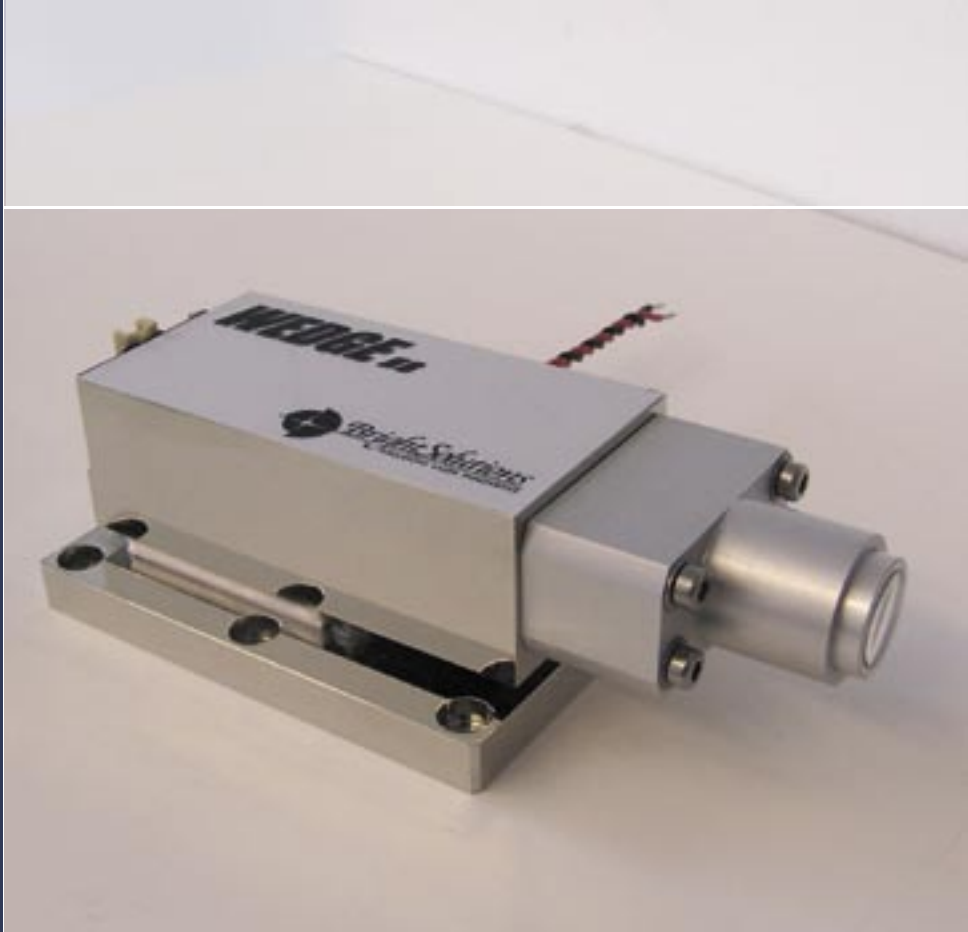
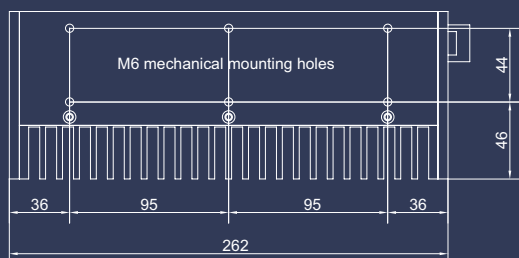
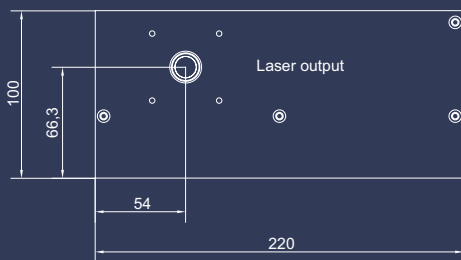




## **WEDGE**

*High Peak Power Diode Pumped Solid State Laser*

- ↘ All solid state design
- ↘ Electrooptic Q-Switching
- ↘ 1 ns pulse duration
- ↘ 1 MW peak power
- ↘ Low heat waste, air cooling



WEDGE emits up to 1.5 mJ at 1064 nm with a pulse duration shorter than 1.5 ns and peak powers exceeding 1 MW. Based on a proprietary electrooptic Q-switching technology, this monolithic laser source features a very high peak power with good wall plug efficiency.

The sealed miniaturized laser head is insensitive to vibrations and harsh environments. High output peak power with relatively low q-switching energy allows efficient nonlinear harmonic or parametric generation as well as interaction with a wide range of materials, including processing of transparent materials.

Second harmonic at 532 nm and third harmonic at 355 nm are optionally available.

#### Applications:

- ↳ Nonlinear spectroscopy
- ↳ 2nd to 4th harmonic generation
- ↳ Visible to IR OPO pumping
- ↳ Material processing
- ↳ Marking of transparent materials

#### ↳ WEDGE

Wavelength	1064 nm
Output energy	Up to 1.5 mJ
Pulse duration	< 1.5 ns
Repetition frequency	Single Shot to 1 kHz
Polarization	Linear, 100 : 1
Energy stability	< 2%
Electrical requirements	-9Vdc, 16A; +15Vdc, 6A
Cooling	Air cooled

Bright Solutions Soluzioni Laser Innovative srl

<http://www.brightsolutions.it>  
[info@brightsolutions.it](mailto:info@brightsolutions.it)

Via Artigiani 27 - 27010 Cura Carpignano (Pv), Italy  
 T +39 0382 583091 - F +39 0382 583690

Bright Solutions policy is focused on continuous product improvement. All specifications are subject to change without notice.