
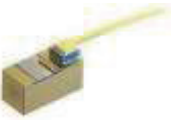











Standard Packages & Options

Free Space Packages	
C-Mount (1) Medium C-Mount (2) Thick C-Mount (3)	
B-Mount (4)	
Q-Mount (5)	
Chip on Submount (6)	
9mm Package (7) 9mm Special (8)	
TO-3 Package (9) w/o TEC (10)	
HHL Package (11)	

Fiber Coupled Packages	
9mm SMA FC Package (12)	
8-pin BFC Package (13) w/o TEC (14)	
FCP Package (15)	
HHL-FC Package (16)	

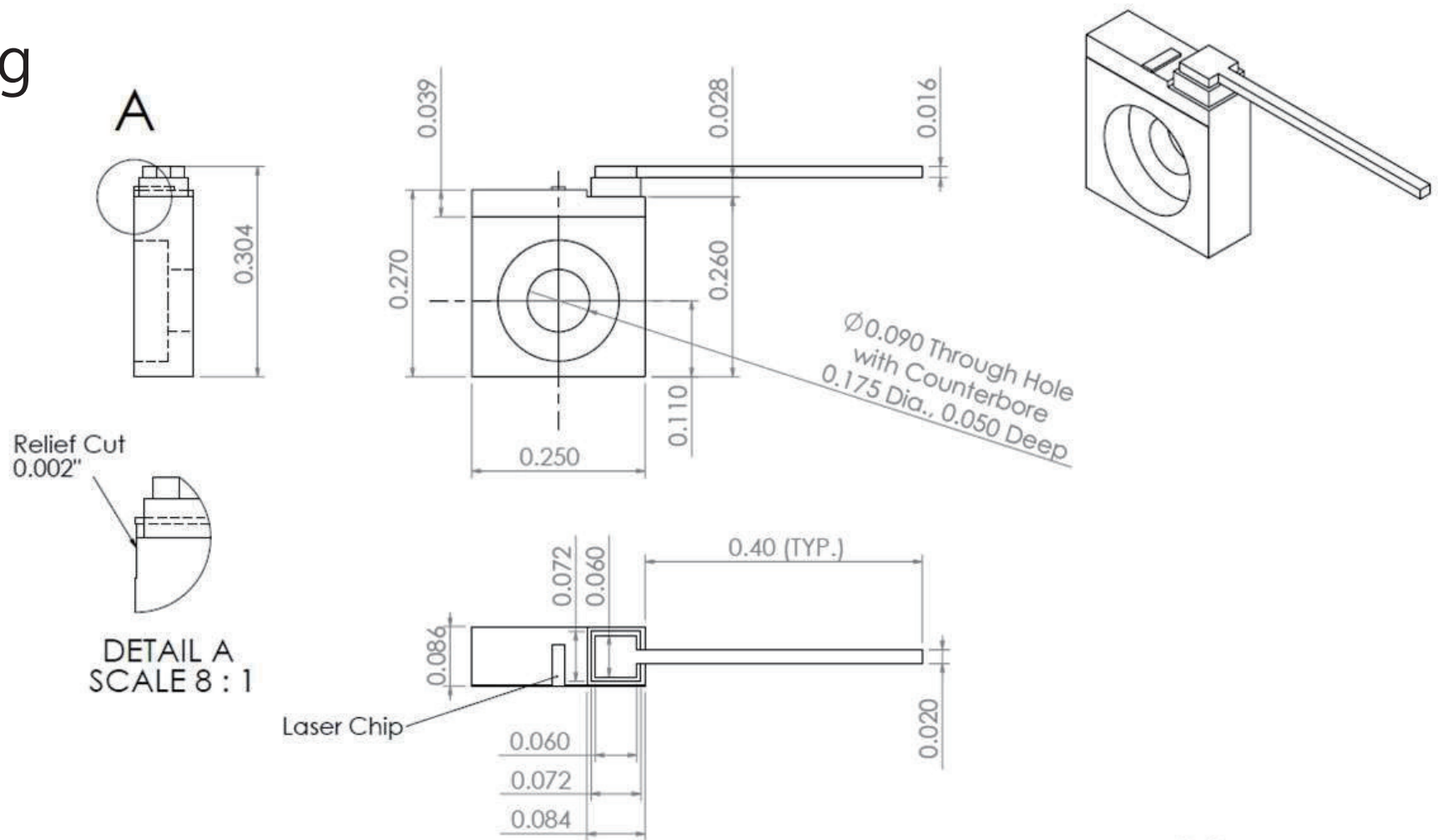
Standard / Optional Features

Package Type	Package #	PD	Thermistor	TEC	FAC
Cstd	1	NO	NO	NO	O
Cmed	2	NO	NO	NO	O
Cthick	3	NO	NO	NO	O
B-Mount	4	NO	NO	NO	O
Q-Mount	5	NO	NO	NO	O
COS	6	NO	NO	NO	O
9mm Package	7	YES	NO	NO	O
TO-3 w/ TEC	9	YES	YES	YES	O
TO-3 w/o TEC	10	O	O	NO	O
HHL Package	11	YES	YES	YES	O
9mm SMA FC	12	YES	NO	NO	O
8-Pin BFC w/ TEC	13	YES	YES	YES	NO
8-Pin BFC w/o TEC	14	YES	YES	NO	NO
FCP Package	15	NO	NO	NO	NO
HHL-FC	16	YES	YES	YES	NO

O-Optional

C-Mount Standard

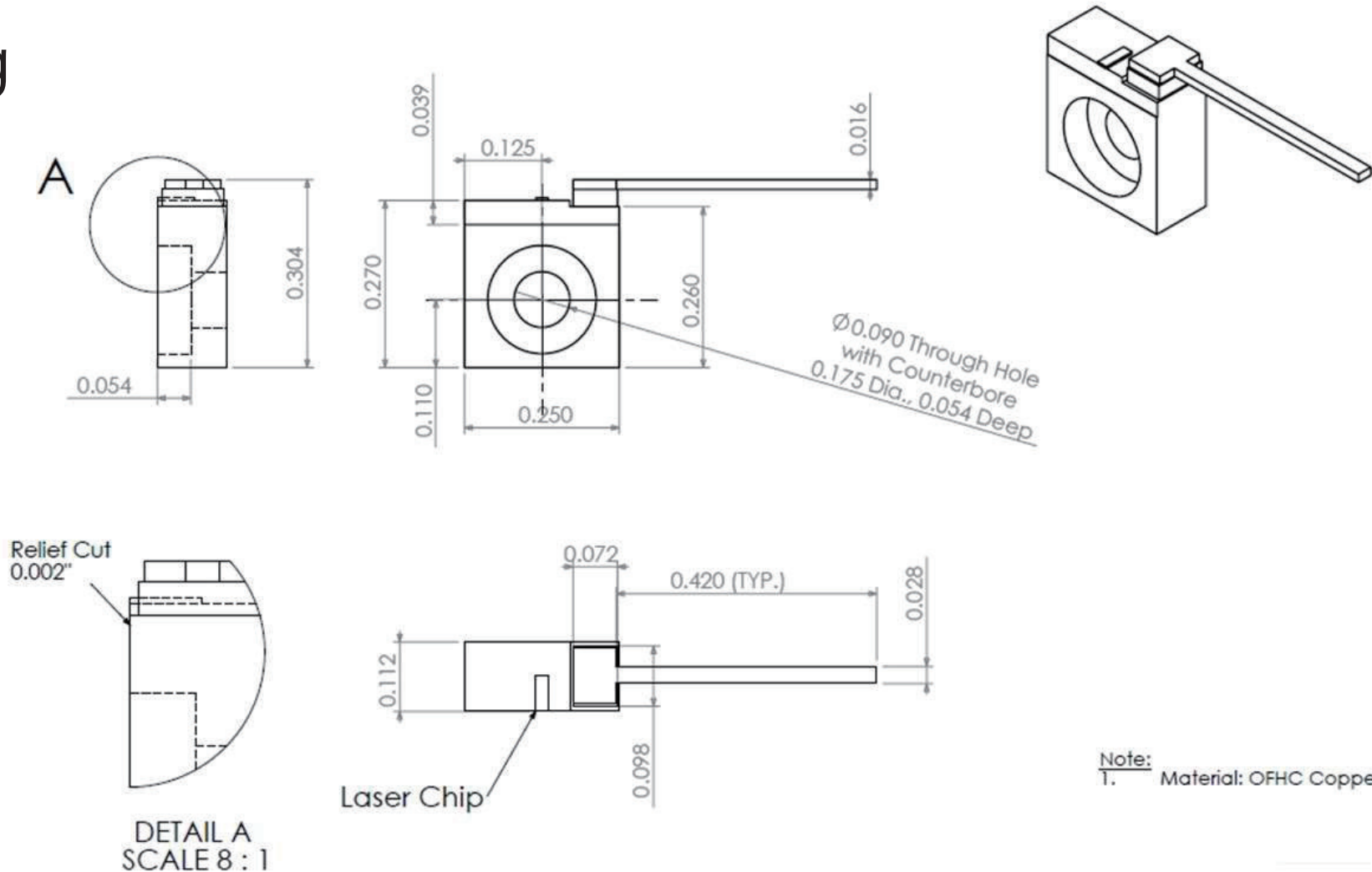
Drawing



Note:
Material: OFHC Copper

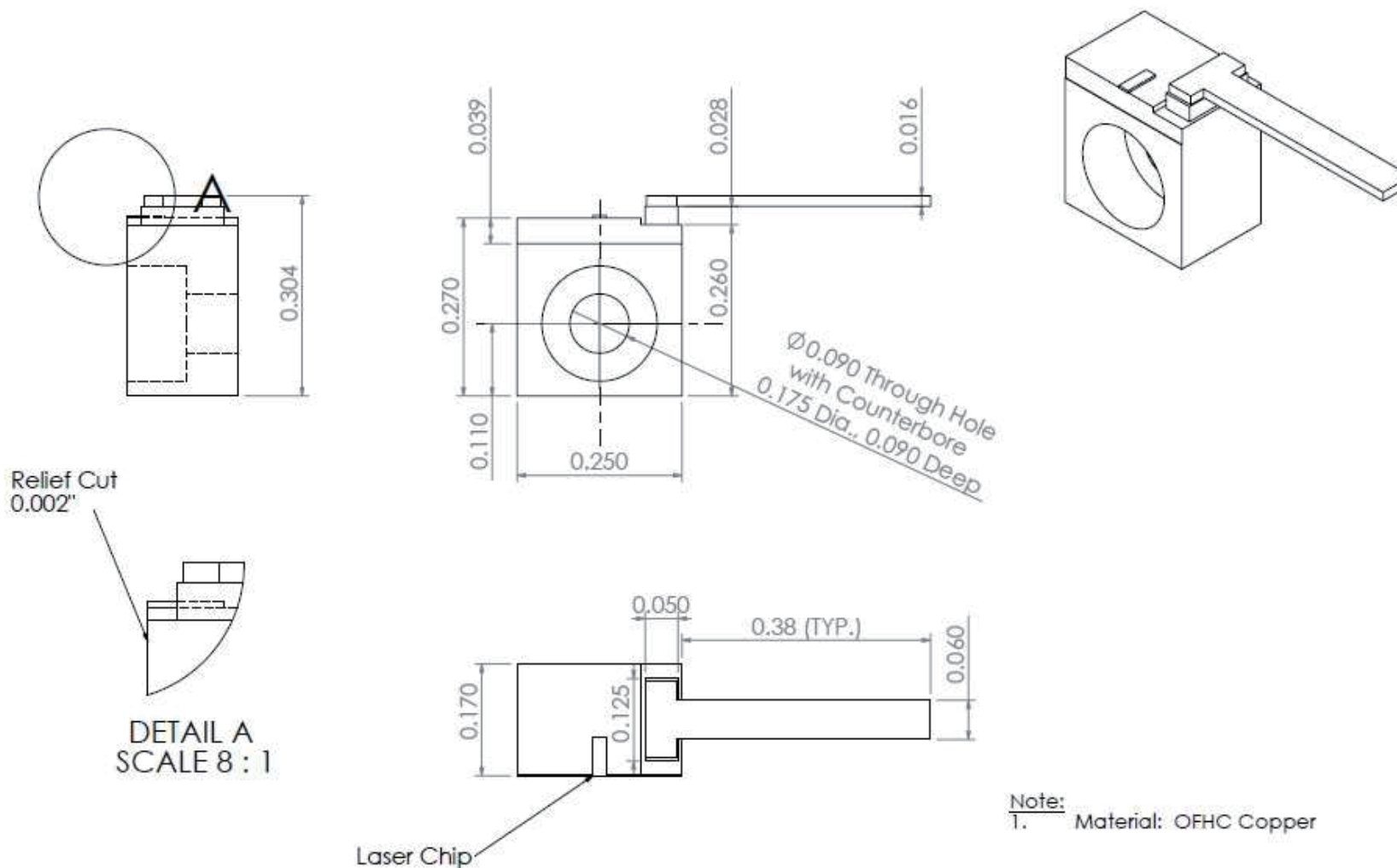
C1-Mount Medium

Drawing



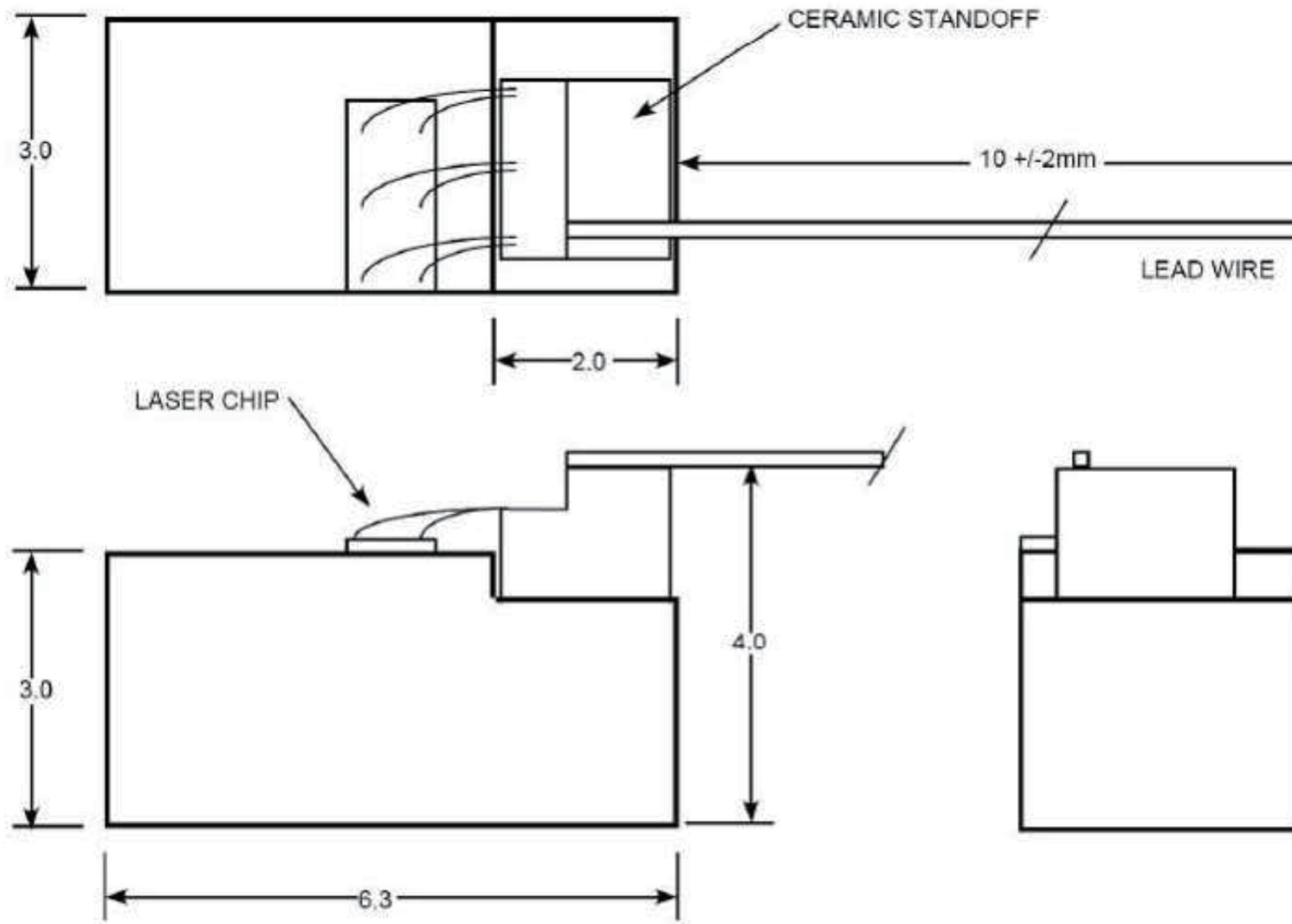
C2-Mount Thick

Drawing



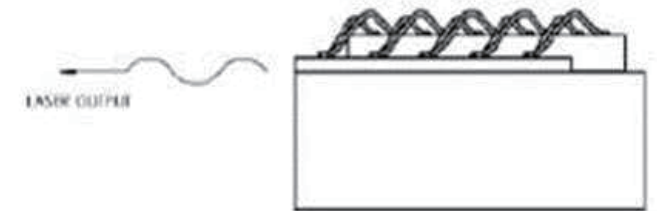
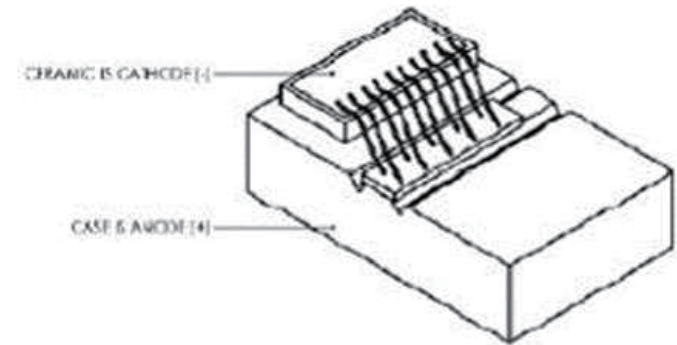
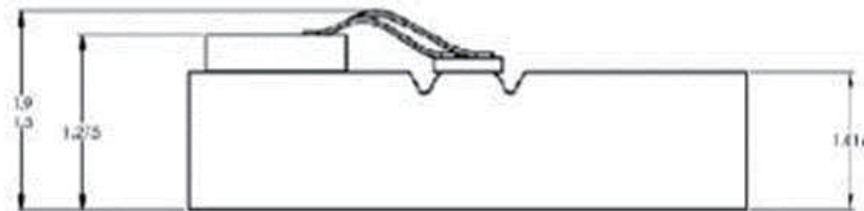
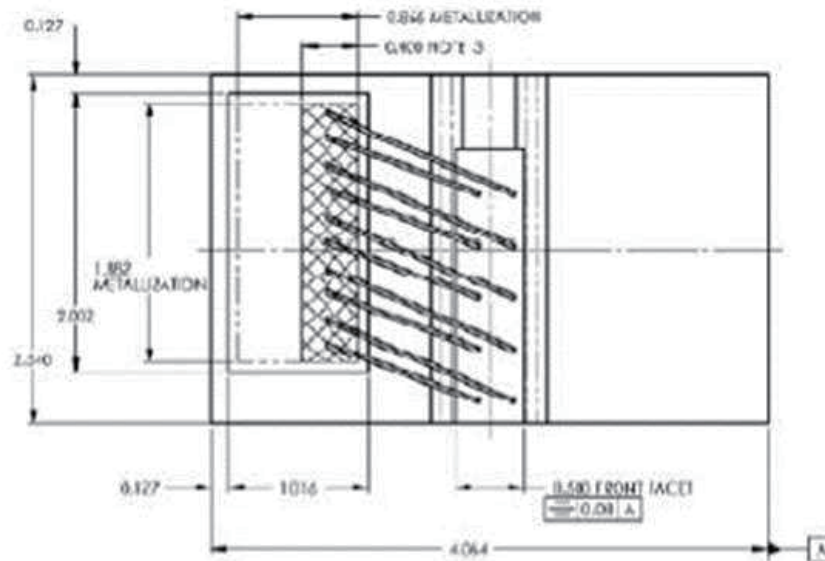
B-Mount Package

Drawing



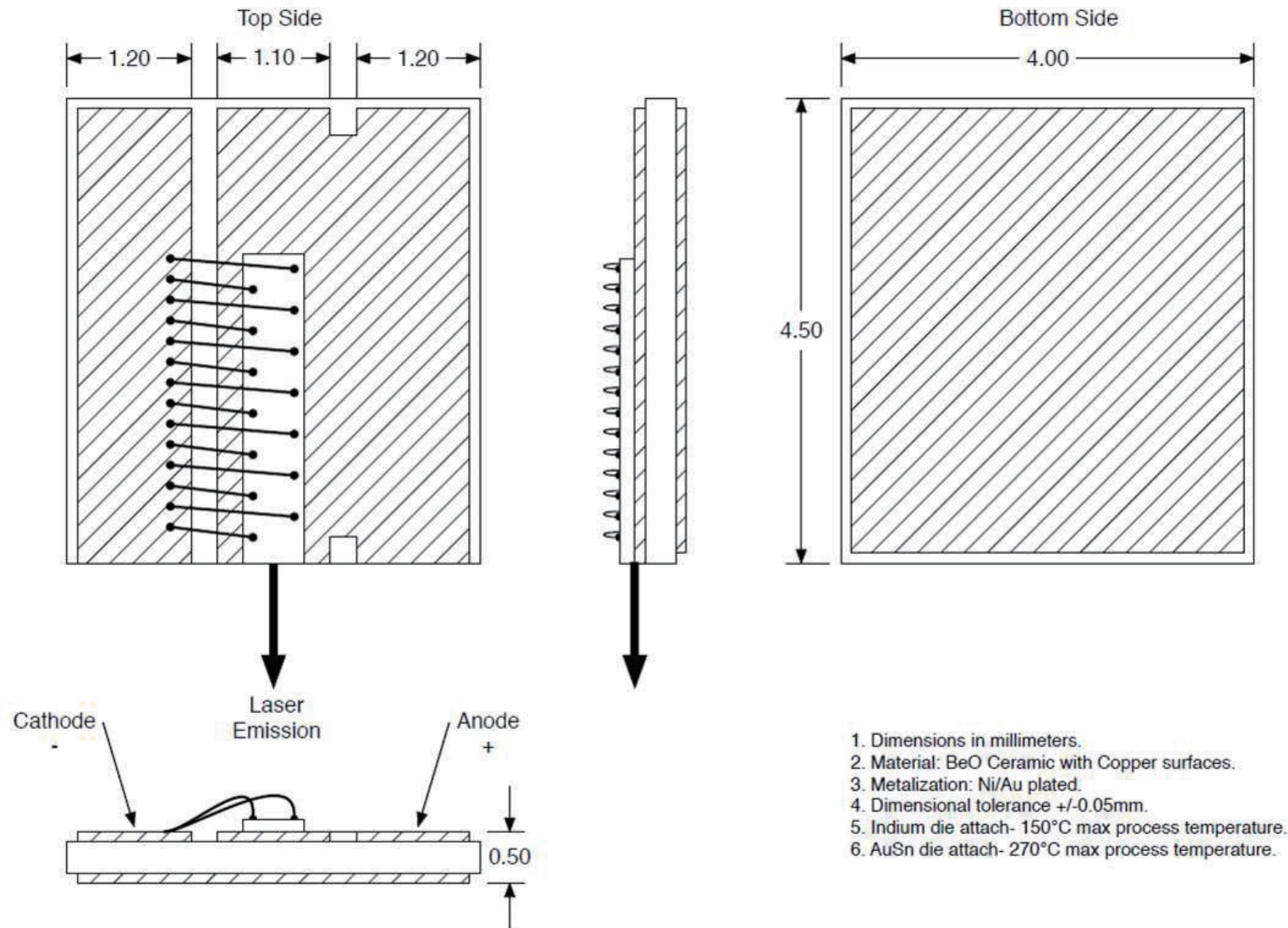
Q-Mount Package

Drawing



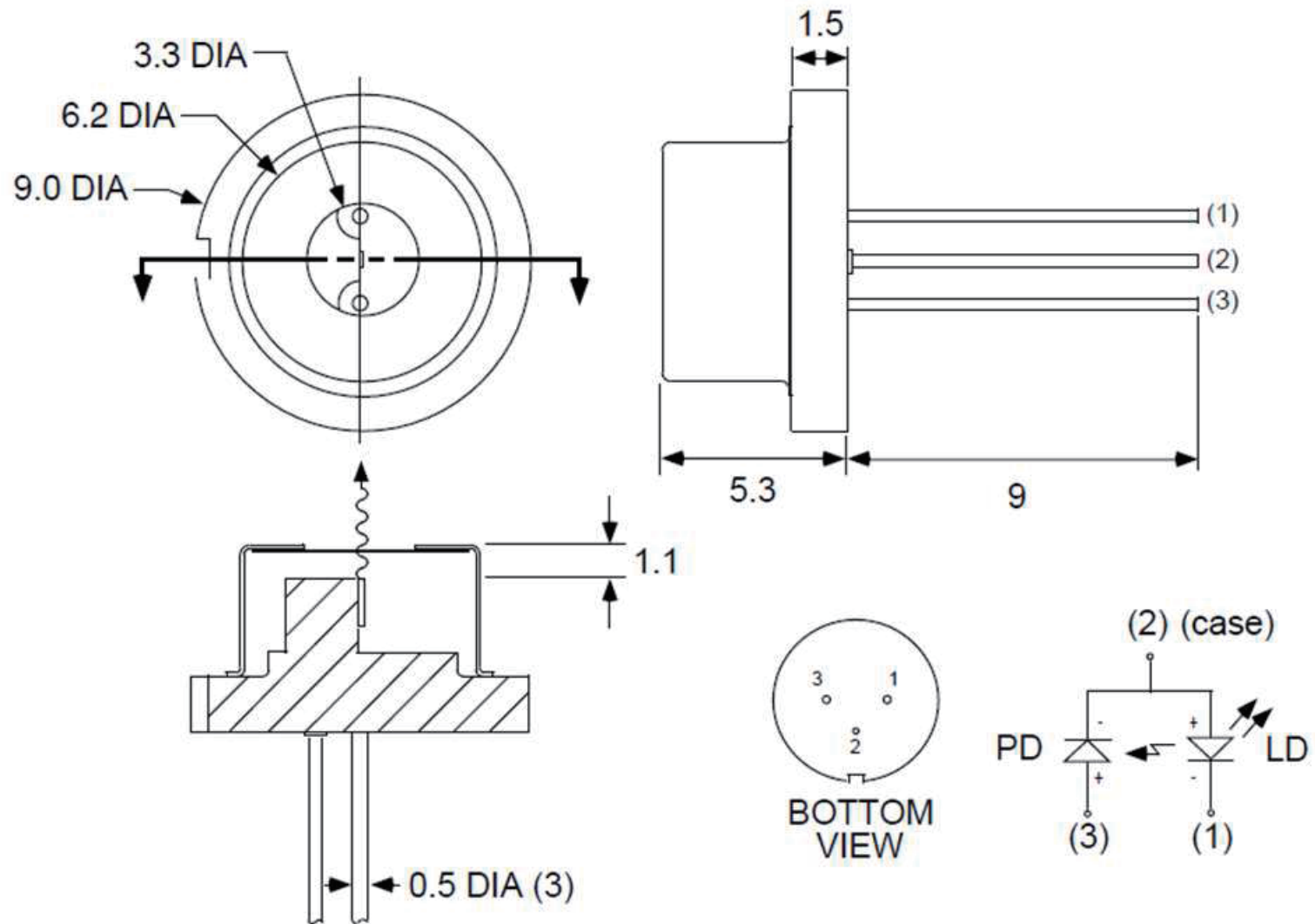
Chip on Submount Package

Drawing



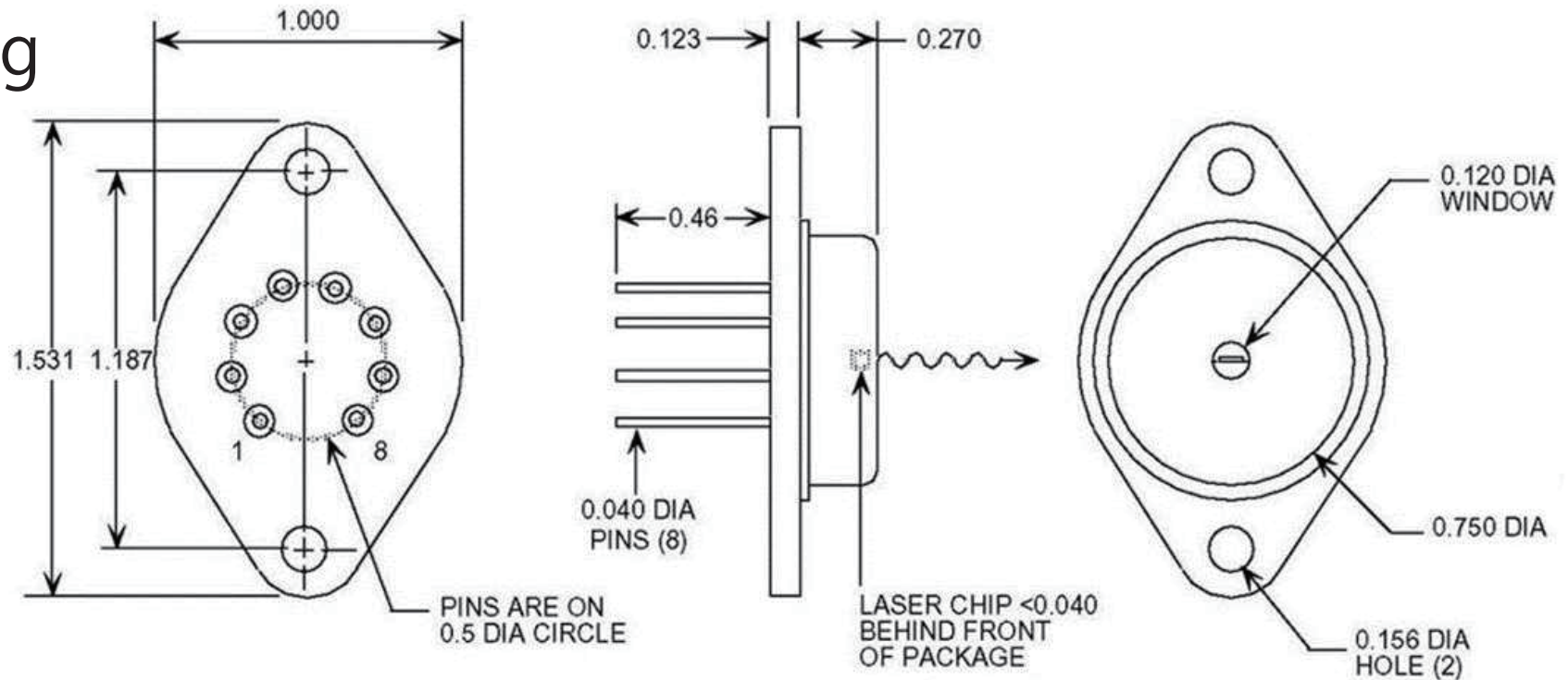
9-mm Package

Drawing



T0-3 Package

Drawing



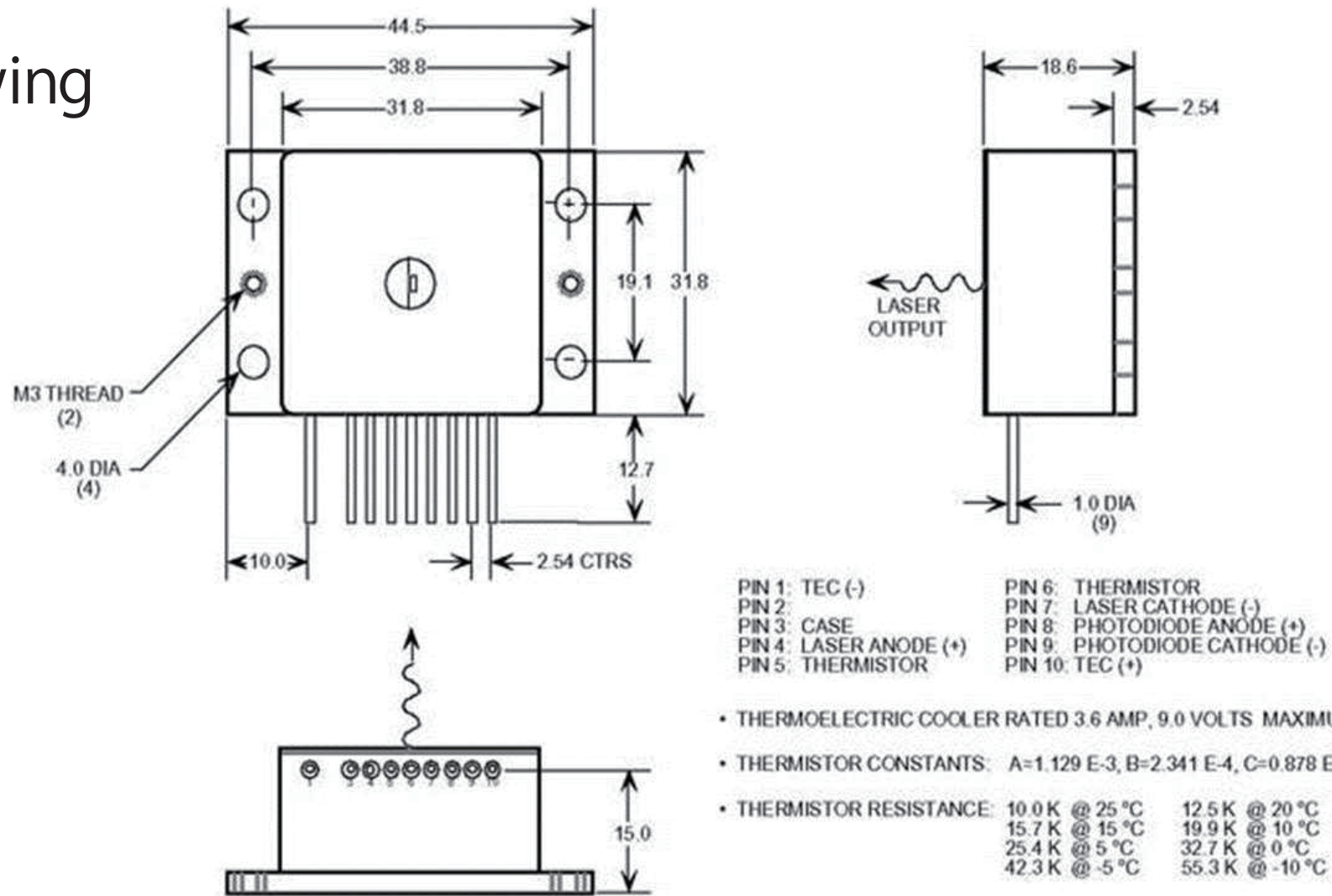
PIN 1: TEC (+)
PIN 2: THERMISTOR
PIN 3: THERMISTOR
PIN 4: LASER CATHODE (-)
PIN 5: LASER ANODE (+)
PIN 6: P.D. ANODE
PIN 7: P.D. CATHODE
PIN 8: TEC (-)

- THERMOELECTRIC COOLER RATED 6.2 VOLT, 1.8 AMP MAXIMUM.
- THERMISTOR CONSTANTS: $A=1.129 \text{ E-3}$, $B=2.341 \text{ E-4}$, $C=0.878 \text{ E-7}$
- THERMISTOR RESISTANCE:

10.0 K	@ 25 °C
12.5 K	@ 20 °C
15.7 K	@ 15 °C
19.9 K	@ 10 °C
25.4 K	@ 5 °C

HHL Package

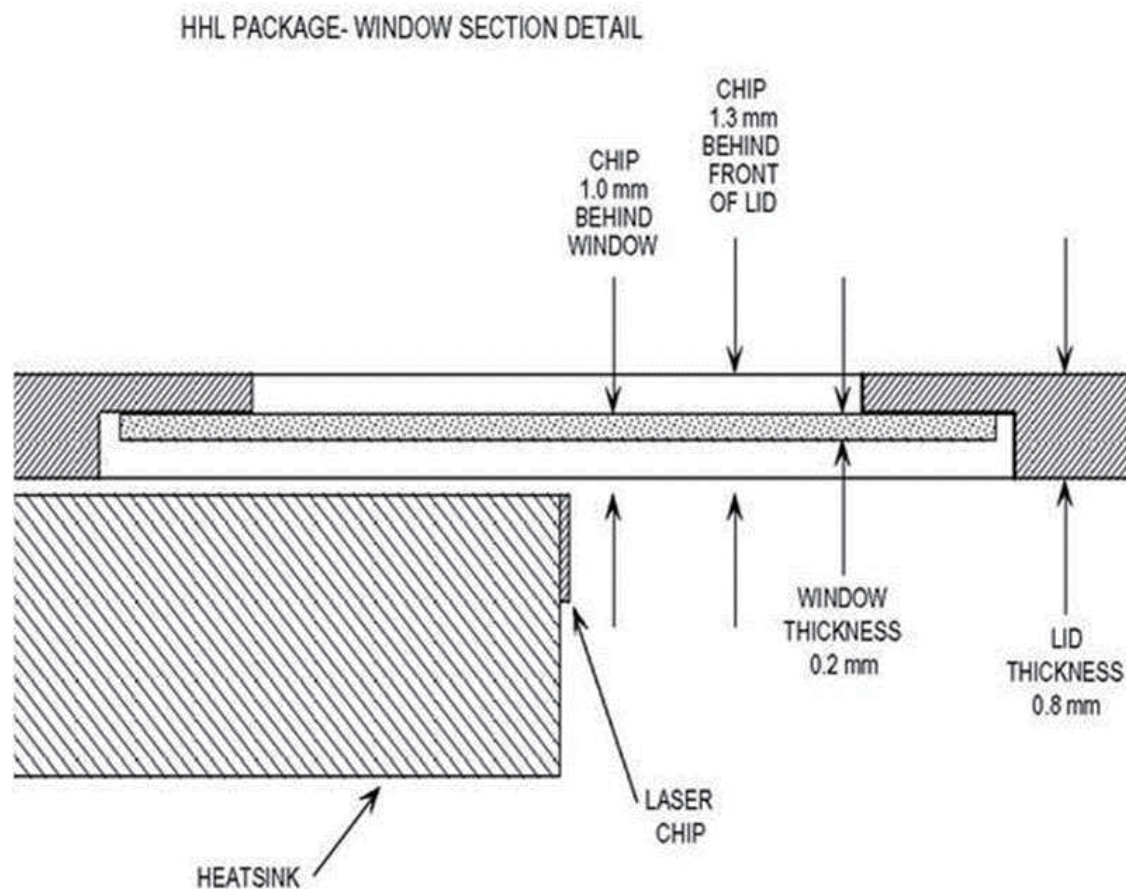
Drawing



ALL DIMENSIONS IN MILLIMETERS

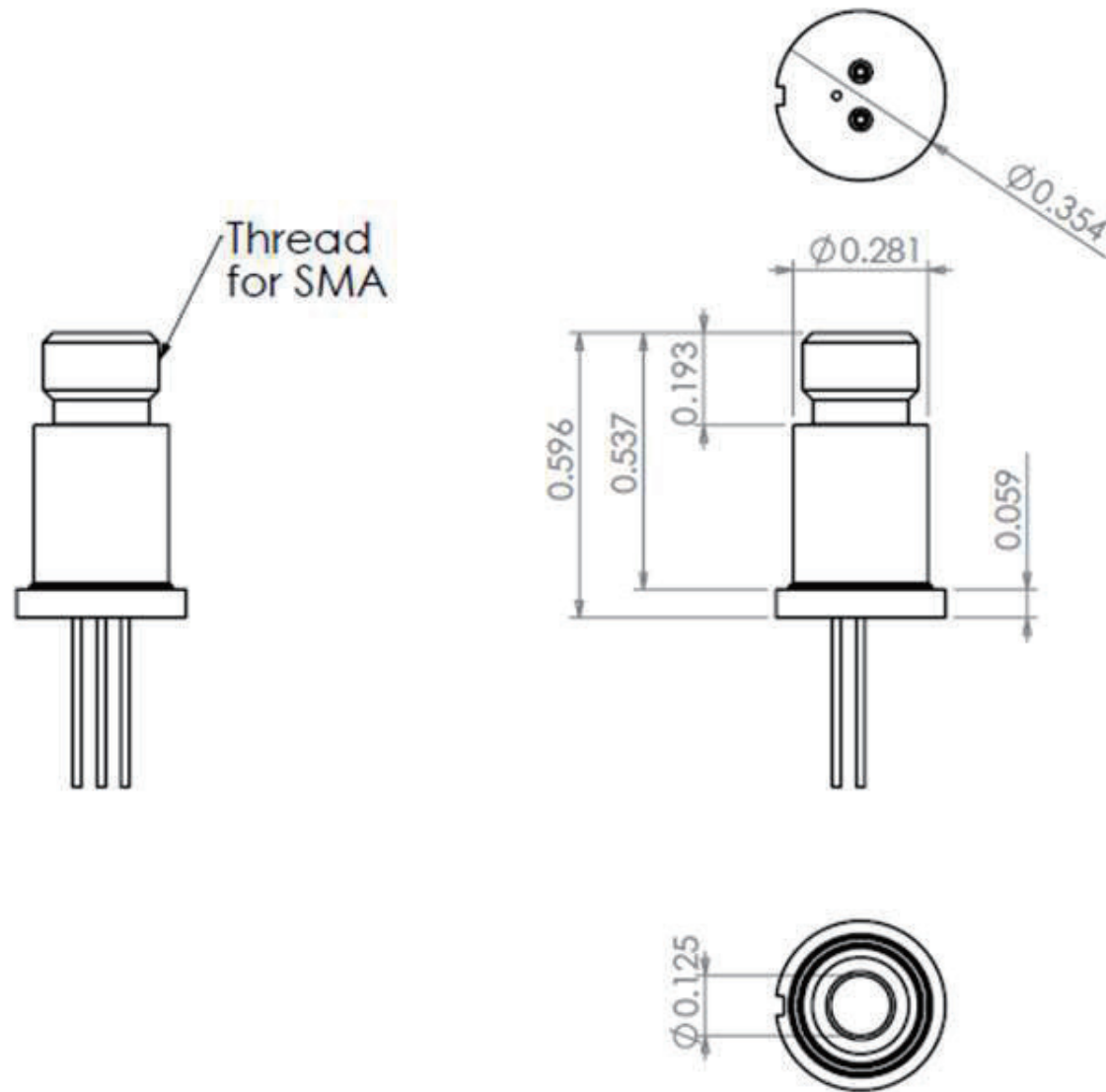
HHL Package-Window Detail

Drawing



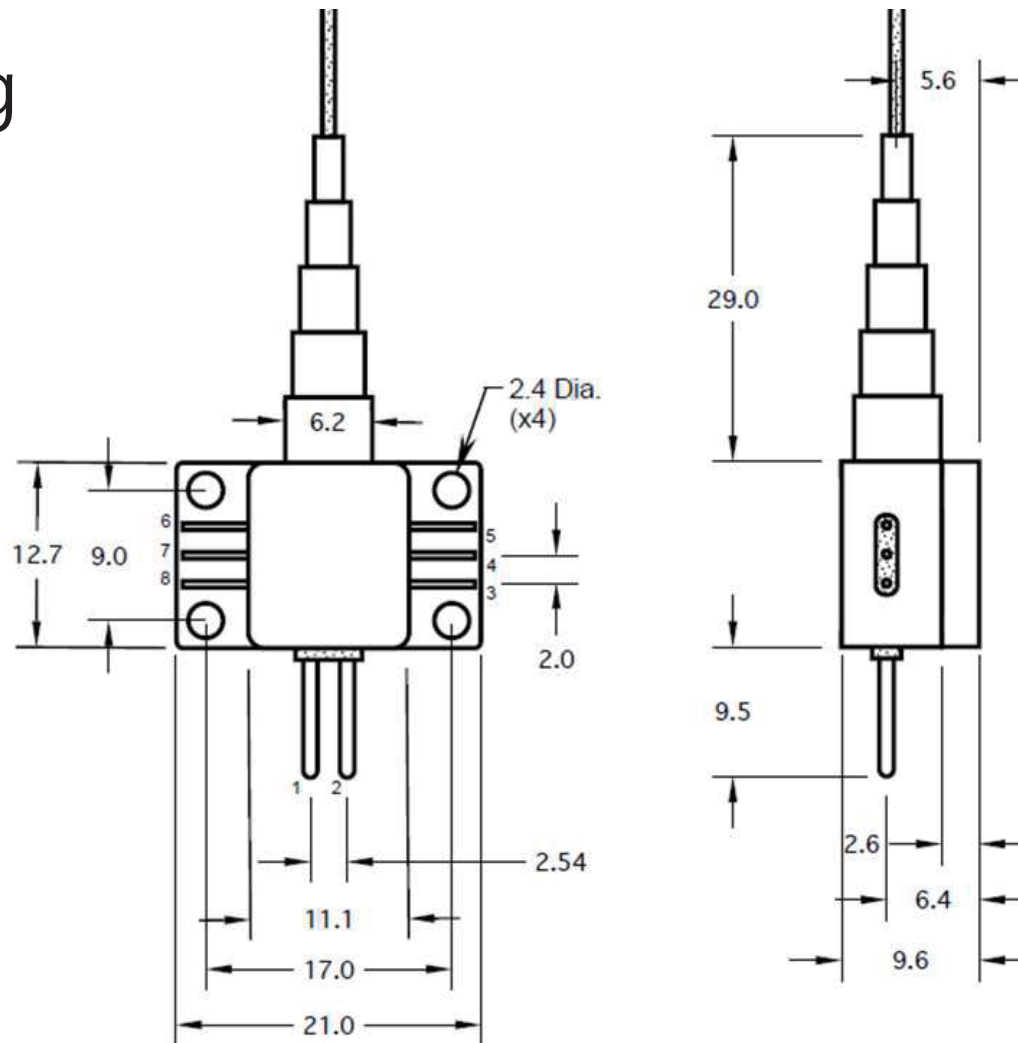
9mm Fiber Coupled Package

Drawing



8-pin HHL Fiber Coupled Package

Drawing



• Standard Pin Assignment:

1. Laser Anode (+)
2. Laser Cathode (-)
3. TEC +
4. Photodiode Anode
5. Photodiode Cathode
6. Thermistor
7. Thermistor
8. TEC -

• Thermoelectric Cooler:

2.5 Amps, 3.5 Volts max.

• Thermistor Constants:

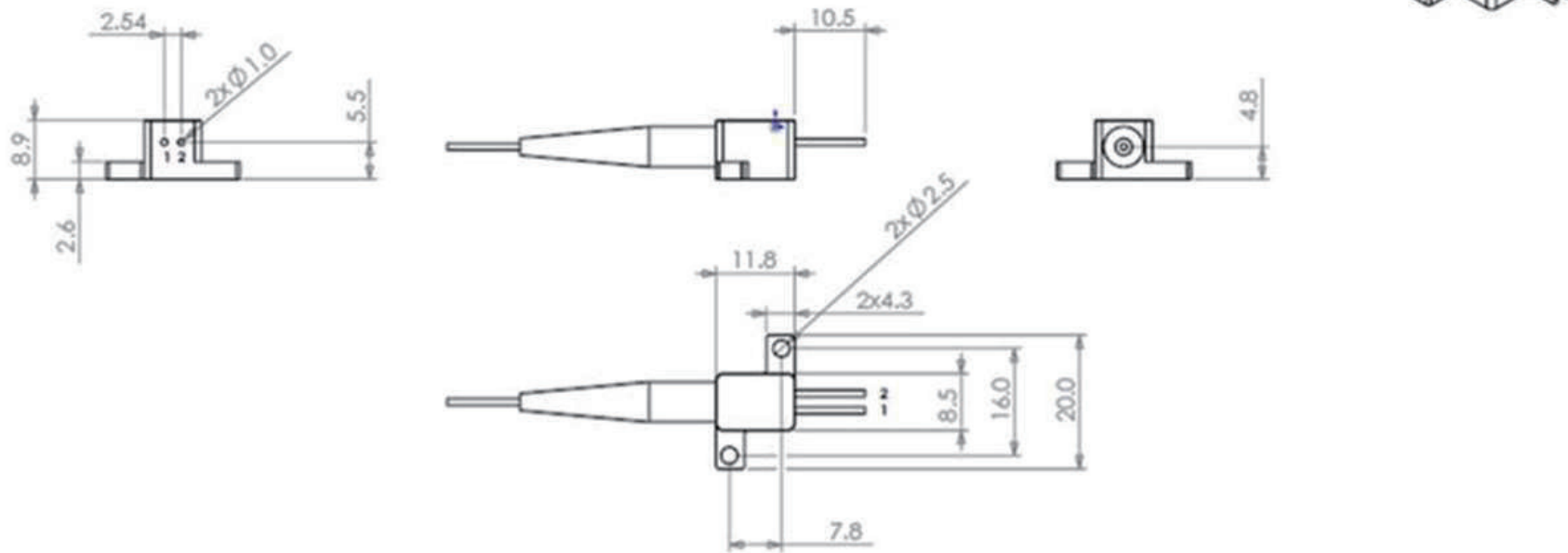
A= 1.129 E-3
B= 2.341 E-4
C= 0.878 E-7

• Thermistor Resistance:

4.37 K Ω @ 45 °C
6.53 K Ω @ 35 °C
10.0 K Ω @ 25 °C
15.7 K Ω @ 15 °C
25.4 K Ω @ 5 °C

2-pin Fiber Coupled Package

Drawing

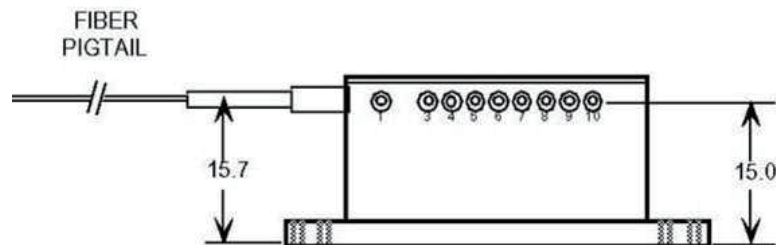
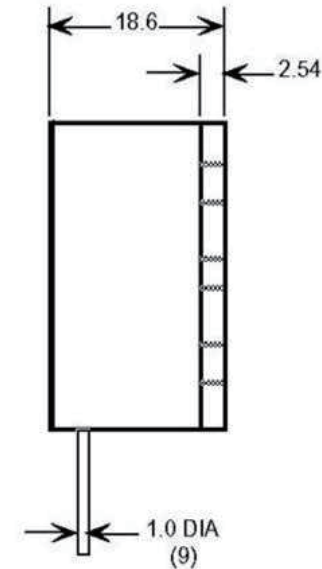
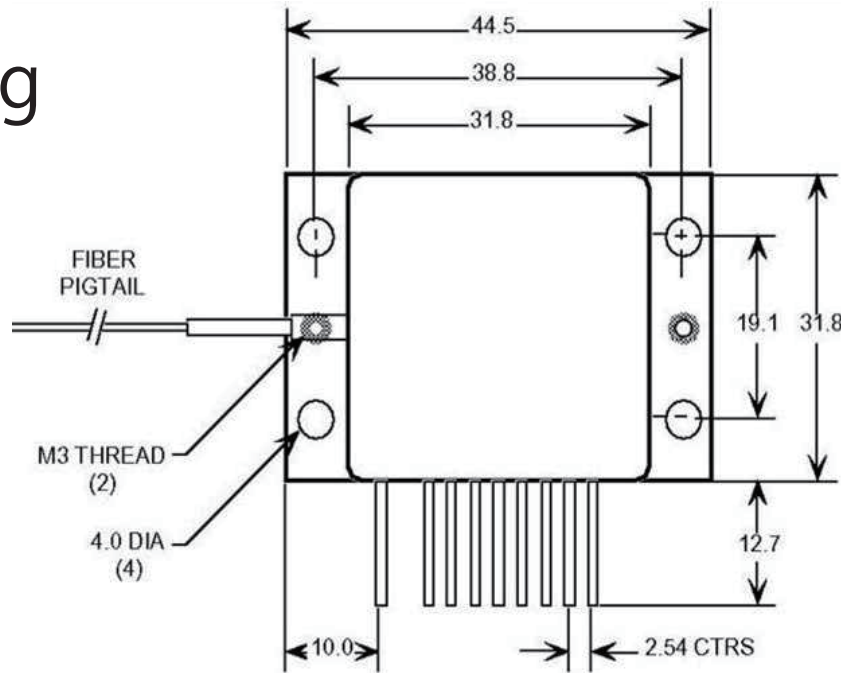


Note:

1. Material: Base-Copper; Frame-Kovar.
2. Pin #1: Anode(+)
3. Pin #2: Cathode (-)

HHL Fiber Coupled Package

Drawing



PIN 1: TEC (-)
PIN 2:
PIN 3: CASE
PIN 4: LASER ANODE (+)
PIN 5: THERMISTOR
PIN 6: THERMISTOR
PIN 7: LASER CATHODE (-)
PIN 8: PHOTODIODE ANODE (+)
PIN 9: PHOTODIODE CATHODE (-)
PIN 10: TEC (+)

- THERMOELECTRIC COOLER RATED 3.6 AMP, 9.0 VOLT MAXIMUM.
- THERMISTOR CONSTANTS: $A=1.129 \text{ E-3}$, $B=2.341 \text{ E-4}$, $C=0.878 \text{ E-7}$
- THERMISTOR RESISTANCE: 10.0 K @ 25 °C
12.5 K @ 20 °C
15.7 K @ 15 °C
19.9 K @ 10 °C